



Brown Family
Environmental Center
at Kenyon College

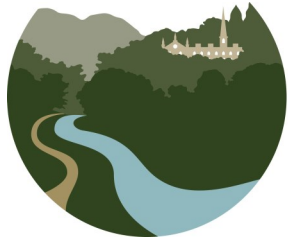
2017 - 2018 Field Trip Schedule



Table of Contents

BFEC's Mission Statement	1
Statement of Education Goals and Philosophy	2
Before You Register for Field Trips	3
Guidelines for Field Trip Registration	3
Bus Arrangements.....	3
While You're At the BFEC	4
Parent Chaperones	4
Cancellation Policy	4
Field Trip Scholarship Grants	5
Field Trip Descriptions	6
Field Trip Dates & Availability	8

The photograph on the front cover is a Compass Plant (*Silphium laciniatum*) growing in BFEC's wildlife garden.



Brown Family
Environmental Center
at Kenyon College

Our Mission:

The Brown Family Environmental Center supports the academic goals of Kenyon College, provides opportunities for education and research, engages Central Ohioans with nature, and conserves the natural diversity of the Kokosing River valley.



Statement of Education Goals and Philosophy

The Brown Family Environmental Center offers a safe environment where students can connect with and develop a relationship with nature.

Whether we are teaching school children, families, or adults, we aim to incorporate the following pedagogical principles into our programs:

- ◆ Hands-on
- ◆ Experiential
- ◆ Total immersion
- ◆ Small group experiences
- ◆ Our instructors are facilitators, not lecturers
- ◆ Structured and safe environment to explore the outdoors
- ◆ Encourage students to think for themselves



We try to do what classroom teachers cannot easily do: provide meaningful outdoor experiences in our prairies, forests, streams, or wetlands; and provide hands-on or kinesthetic investigations, activities, and games.

In an effort to create a well-rounded program, we use a three-tiered approach when we design our lessons. In each lesson, we aspire to integrate the following concepts:



- ◆ Natural History: identify the local flora and fauna, and provide “fun facts” for each
- ◆ Ecology: show relationships between flora and fauna, between abiotic and biotic factors, and how humans fit in
- ◆ Stewardship: consider changes that we can make in our behavior so that our actions have a positive impact on ecosystems instead of a negative impact



Before you register for BFEC Field Trips....

- ◆ A **fee of \$2.00** per student, up to a maximum of \$40 per class, is payable by cash or check at the time of your visit. You may also request an invoice. There is no fee for Head Start students.
- ◆ Thanks to a grant from the Community Foundation of Mount Vernon and Knox County, we have a limited number of Field Trip Scholarship Grants available to fund transportation costs for schools facing financial hardship. **See page 5** for more information. You can download the application at bfec.kenyon.edu (see community outreach). The application deadline for this fall is September 1, 2017.
- ◆ If you would like to **review a lesson plan** in order to plan pre- or post-trip classroom activities, please contact Noelle Jordan at jordan2@kenyon.edu.

*Thanks to the support of The Community Foundation,
field trip scholarships are available.*



Guidelines for Field Trip Registration

- ◆ **We will begin accepting reservations for this year's field trips on August 14.** Our calendar fills up quickly; we encourage teachers to contact us on or soon after this date.
- ◆ Please send an email to Jill Kerkhoff at kerkhoffj@kenyon.edu indicating which program and which dates you prefer (see pages 6-16 for more details on programs & availability). With the exception of the dates below in the red box, we can take 2 classes (up to 48 students) at one time. Start times are flexible: 9:00am, 9:30am, 12:00pm or 12:30pm.

November 27 - March 9

*** we can take only 1 class (up to 25 students) at one time**

*** times available are 12:00pm - 2:00pm, or 12:30 - 2:30**

- ◆ After receiving your request, we will send a confirmation email with the date and time of your scheduled field trip.

Bus Arrangements



- ◆ Teachers must make all bus arrangements.
- ◆ For schools facing financial hardship, we have a limited number of Field Trip Scholarship Grants available to fund transportation costs. **See page 5** for the application.
- ◆ Please have the bus drop you off at the BFEC at the scheduled start time for the program.
- ◆ Buses can park in the BFEC parking lot during the program.

While you're at the BFEC....



- ◆ Students with bee allergies must carry their epi-pen with them at all times. Stinging insects (including bees, wasps, and hornets) are frequently encountered at the BFEC.
- ◆ Students, teachers, and parent chaperones must wear closed-toed shoes and shoes with a closed heel (no sandals, flip flops, etc.).
- ◆ Most of our programs have a rainy-day/indoor alternate lesson plan; therefore, most programs will be conducted rain or shine. The indoor version requires students to walk to and from the Resource Center and the picnic pavilion. Please make sure students dress appropriately.
- ◆ Please provide name tags for your students.
- ◆ You may stay after or arrive early to enjoy a sack lunch in our picnic pavilion. If you choose to do this, make sure your students bring a sack lunch. Please let us know in advance so we can reserve the picnic pavilion for you.



Parent Chaperones

- ◆ For safety reasons, the BFEC asks you to bring **1 adult for every 10 students, plus one** extra. For example, if you have 20 students in your class, you should bring 3 adults, including teachers and parents. The exceptions to this include one-on-one aides and Head Start programs. In these situations, we know that you will bring additional adults.
- ◆ Please make sure parent chaperones do **not** bring younger siblings/children.
- ◆ Ensure parent chaperones arrive with the students.
- ◆ Parent chaperones must stay with the class at all times.
- ◆ Please leave your cell phones in your pocket (unless you're taking pictures). We want parent chaperones to be actively engaged as role models for our field trips.

Cancellation Policy

- ◆ Because most programs have rainy-day/indoor versions, the BFEC generally will not cancel programs due to weather.
- ◆ We strongly discourage teachers from cancelling their program. When teachers cancel at the last minute, we cannot fill the slot.
- ◆ We understand that unexpected situations arise. If you need to cancel, please let us know as soon as possible.

Field Trip Scholarship Grants

Through the generous support of the Community Foundation of Mount Vernon and Knox County, we are able to offer several scholarships each semester for the reimbursement of transportation costs.

Rules & Eligibility

Eligible schools must:

- be a private or public school in Knox County.
- have sustained significant or complete funding cuts for field trip fees in the last three years, OR
- have 50% or greater eligibility among enrolled elementary students for free or reduced lunch.

Schools that do not meet the above eligibility standards but can demonstrate extreme circumstances or need may also apply and should provide those details in their applications. Grants will be awarded on a first-received, first-funded basis until all funds have been awarded. Depending on demand, the BFEC may limit awards to one grade level per school building. The BFEC may only partially fund requests. Schools that receive this scholarship will be reimbursed for transportation costs.

When to Apply & Schedule Your Field Trip

For Fall 2017 field trips, teachers are encouraged to submit applications as early as possible, but not later than September 1. The BFEC cannot guarantee availability for groups applying after September 1, 2017.

Award Notification

Applicants will be notified of their award status by email within two weeks of receipt of the application. If an award is made, Jill Kerkhoff will contact the grantee to schedule the field trip.

Grant Payment

Transportation costs: payment will be made directly to the school or the transportation company providing busing. **Payment will be issued after a field trip evaluation form AND receipt or invoice** for transportation have been submitted. It is the applicant's responsibility to submit this paperwork in a timely manner. An evaluation sheet will be provided during the field trip.

Field trip fees: BFEC field trip fees will be waived for schools that are awarded a grant.

For Questions or to Request / Submit Applications

Please direct all questions and requests for applications to Jill Kerkhoff at the email below. Applications may be downloaded and completed electronically or printed and completed by hand. Applications may be submitted via email, fax, or hard mail, and should be sent to:

Jill Kerkhoff
P.O.Box 508
Gambier, OH 43022
Phone: 740-427-5053
Fax: 740-427-5054
Email: kerkhoffj@kenyon.edu

Field Trip Descriptions

Refer to the calendars on pages 8-16 for exact dates and times of each program. All programs are 2 hours long, unless otherwise noted.

ABC's of Nature (Spring)

Grade Level: Pre-K

Based on activities from Growing Up WILD™, this new field trip incorporates art, biology, counting (or light math) as well as singing and movement as different methods to explore nature. This **1 1/2 hour program** includes a nature hike that is peppered with hands-on and kinesthetic activities, along with some easy art projects that combine science and math. Fun will be had!



Ohio Animal Olympics (Spring)

Grade Levels: K, 1, 2

During this engaging lesson, students will attempt to mimic some of the amazing abilities of our local wildlife. Can your students hop as far as a frog? Can they echolocate like a bat? And everyone's favorite — can they “spray” as far as a skunk? All this and more promises for a fun and educational program.



Habitat Hop (Fall)

Grade Levels: K, 1, 2

Students will explore three components of a habitat: food, water, and shelter. As we venture from prairie, to forest, to our ponds, and our garden, students will meet some plants and discover some animals in these different habitats.



Soil I: Get the Scoop (Fall)

Grade Levels: 3, 4, 5

This fast-paced program includes hands-on examinations of soil formation, soil color, soil horizons, and permeability. We'll take a hike and use soil corers to examine the earth under our feet.



Soil II: The Earth Moves (Spring)

Grade Levels: 3, 4, 5

This program explores erosion and deposition through experiments and nature observations. Part of our investigation will include a small stream or the Kokosing River. Students should wear shoes that can get wet.



Grasshopper Dissection (Winter) Grade Levels: 4, 5, 6, 7, 8

Students will focus on safe lab procedures as we explore the world of invertebrates inside and out. We will focus on the unique external anatomy of a large Lubber Grasshopper before we cut it open to review the digestive system of this herbivore. Each student will dissect their own grasshopper and then they will mount the legs, wings, antennae and mouthparts to an index card that they will take with them. For this indoor program, we can take only 1 class per session (up to 25 students).



Alternative Energy: Windmills (Winter) Grade Levels: 6, 7, 8

During this indoor experience, students will balance 4 variables as they design windmill blades. Using a fan, they will test their blade designs in an attempt to light an LED light bulb. For this program, we can take only 1 class per session (up to 25 students).



Watershed Basics (Fall) Grade Levels: 6, 7, 8

We will explore and use hands-on experiments to learn about our local watershed. Students will use simple chemical tests to examine pH, temperature, dissolved oxygen, turbidity, and more. We will also identify macroinvertebrates and fish to verify water quality.



Nature Journaling (Spring) Grade Levels: 6, 7, 8

Students will test their observational skills and use a combination of sketching, language arts, and mapping to document what they encounter during a nature hike. Each student will receive a journal that they can take home.



"Thank you for our field trip. Our entire team of teachers all agreed it was absolutely fantastic! It was extremely organized, fit perfectly with our science standards, and ALL of our students had a blast. I cannot express how grateful I am that you were able to provide my students with a 'real world' science experience."

7th Grade Teacher
Mount Vernon Middle School
May 4, 2017

September 2017

Sun	Mon	Tue	Wed	Thu	Fri	Sat	
3	4	5	<p>Please note: <u>September 11 - November 17</u> * we can take 2 classes (up to 48 students) at one time * start times are flexible - 9:00, 9:30, 12:00 & 12:30 * programs are 2 hours long</p>			9	2
10	11	12	13	14	15	16	
17	18	19	20	21	22	23	
24	25	26	27	28	29	30	

October 2017

Sun	Mon	Tue	Wed	Thu	Fri	Sat
1	2 Field Trips Available: Habitat Hop, gr K-2 Soil I, gr 3-5 Watershed, gr 6-8	3 Field Trips Available: Habitat Hop, gr K-2 Soil I, gr 3-5 Watershed, gr 6-8	4 Field Trips Available: Habitat Hop, gr K-2 Soil I, gr 3-5 Watershed, gr 6-8	5 <i>No Field Trips Today</i>	6 <i>No Field Trips Today</i>	7
8	9 Field Trips Available: Habitat Hop, gr K-2 Soil I, gr 3-5 Watershed, gr 6-8	10 Field Trips Available: Habitat Hop, gr K-2 Soil I, gr 3-5 Watershed, gr 6-8	11 Field Trips Available: Habitat Hop, gr K-2 Soil I, gr 3-5 Watershed, gr 6-8	12 Field Trips Available: Habitat Hop, gr K-2 Soil I, gr 3-5 Watershed, gr 6-8	13 <i>No Field Trips Today</i>	14 <i>Fall Harvest Festival</i>
15	16 <i>No Field Trips Today</i>	17 Field Trips Available: Soil I, gr 3-5 Watershed, gr 6-8	18 Field Trips Available: Soil I, gr 3-5 Watershed, gr 6-8	19 Field Trips Available: Soil I, gr 3-5 Watershed, gr 6-8	20 Field Trips Available: Soil I, gr 3-5 Watershed, gr 6-8	21
22	23 Field Trips Available: Soil I, gr 3-5 Watershed, gr 6-8	24 Field Trips Available: Soil I, gr 3-5 Watershed, gr 6-8	25 Field Trips Available: Soil I, gr 3-5 Watershed, gr 6-8	26 <i>No Field Trips Today</i>	27 Field Trips Available: Soil I, gr 3-5 Watershed, gr 6-8	28
29	30 Field Trips Available: Soil I, gr 3-5 Watershed, gr 6-8	31 Field Trips Available: Soil I, gr 3-5 Watershed, gr 6-8	<p>Please note: <u>September 11 - November 17</u> * we can take 2 classes (up to 48 students) at one time * start times are flexible - 9:00, 9:30, 12:00 & 12:30 * programs are 2 hours long</p>			

November 2017

Sun	Mon	Tue	Wed	Thu	Fri	Sat
		<div style="border: 2px solid red; padding: 5px;"> <p>Please note: <u>September 11 - November 17</u> * we can take 2 classes (up to 48 students) at one time * start times are flexible - 9:00, 9:30, 12:00 & 12:30 * programs are 2 hours long</p> </div>	1 Field Trips Available: Soil I, gr 3-5 Watershed, gr 6-8	2 Field Trips Available: Soil I, gr 3-5 Watershed, gr 6-8	3 Field Trips Available: Soil I, gr 3-5 Watershed, gr 6-8	4
5	6 Field Trips Available: Soil I, gr 3-5	7 Field Trips Available: Soil I, gr 3-5	8 Field Trips Available: Soil I, gr 3-5	9 Field Trips Available: Soil I, gr 3-5	10 Field Trips Available: Soil I, gr 3-5	11
12	13 Field Trips Available: Soil I, gr 3-5	14 Field Trips Available: Soil I, gr 3-5	15 Field Trips Available: Soil I, gr 3-5	16 Field Trips Available: Soil I, gr 3-5	17 Field Trips Available: Soil I, gr 3-5	18
19	20	21	22 <i>No Field Trips This Week - Thanksgiving</i>	23	24	25
26	27 Field Trips Available: GH Dissection, gr 4-8 Windmills, gr 6-8	28 Field Trips Available: GH Dissection, gr 4-8 Windmills, gr 6-8	29 Field Trips Available: GH Dissection, gr 4-8 Windmills, gr 6-8	30 Field Trips Available: GH Dissection, gr 4-8 Windmills, gr 6-8		

December 2017

Sun	Mon	Tue	Wed	Thu	Fri	Sat
					1 Field Trips Available: GH Dissection, gr 4-8 Windmills, gr 6-8	2
3	4	5	6	7	8	9
	Field Trips Available: GH Dissection, gr 4-8 Windmills, gr 6-8	Field Trips Available: GH Dissection, gr 4-8 Windmills, gr 6-8	Field Trips Available: GH Dissection, gr 4-8 Windmills, gr 6-8	Field Trips Available: GH Dissection, gr 4-8 Windmills, gr 6-8	Field Trips Available: GH Dissection, gr 4-8 Windmills, gr 6-8	Field Trips Available: GH Dissection, gr 4-8 Windmills, gr 6-8
10	11	12	13	14	15	16
	Field Trips Available: GH Dissection, gr 4-8 Windmills, gr 6-8	Field Trips Available: GH Dissection, gr 4-8 Windmills, gr 6-8	Field Trips Available: GH Dissection, gr 4-8 Windmills, gr 6-8	Field Trips Available: GH Dissection, gr 4-8 Windmills, gr 6-8	Field Trips Available: GH Dissection, gr 4-8 Windmills, gr 6-8	Field Trips Available: GH Dissection, gr 4-8 Windmills, gr 6-8
17	18	19	20	21	22	23
24	25	26	27	28	29	30
			<i>No Field Trips This Week -</i>	<i>Winter Break</i>		
31			<i>No Field Trips This Week -</i>	<i>Winter Break</i>		

January 2018

Sun	Mon	Tue	Wed	Thu	Fri	Sat
	1	2	3	4	5	6
		<i>No Field Trips This Week - Winter Break</i>				
7	8	9	10	11	12	13
	Field Trips Available: GH Dissection, gr 4-8 Windmills, gr 6-8	Field Trips Available: GH Dissection, gr 4-8 Windmills, gr 6-8	Field Trips Available: GH Dissection, gr 4-8 Windmills, gr 6-8	Field Trips Available: GH Dissection, gr 4-8 Windmills, gr 6-8	Field Trips Available: GH Dissection, gr 4-8 Windmills, gr 6-8	
14	15	16	17	18	19	20
	<i>No Field Trips Today</i>	Field Trips Available: GH Dissection, gr 4-8 Windmills, gr 6-8	Field Trips Available: GH Dissection, gr 4-8 Windmills, gr 6-8	Field Trips Available: GH Dissection, gr 4-8 Windmills, gr 6-8	Field Trips Available: GH Dissection, gr 4-8 Windmills, gr 6-8	
21	22	23	24	25	26	27
	Field Trips Available: GH Dissection, gr 4-8 Windmills, gr 6-8	Field Trips Available: GH Dissection, gr 4-8 Windmills, gr 6-8	Field Trips Available: GH Dissection, gr 4-8 Windmills, gr 6-8	Field Trips Available: GH Dissection, gr 4-8 Windmills, gr 6-8	Field Trips Available: GH Dissection, gr 4-8 Windmills, gr 6-8	
28	29	30	31			
	Field Trips Available: GH Dissection, gr 4-8 Windmills, gr 6-8	Field Trips Available: GH Dissection, gr 4-8 Windmills, gr 6-8	Field Trips Available: GH Dissection, gr 4-8 Windmills, gr 6-8			

February 2018

Sun	Mon	Tue	Wed	Thu	Fri	Sat
				1 Field Trips Available: GH Dissection, gr 4-8 Windmills, gr 6-8	2 Field Trips Available: GH Dissection, gr 4-8 Windmills, gr 6-8	3
4	5 Field Trips Available: GH Dissection, gr 4-8 Windmills, gr 6-8	6 Field Trips Available: GH Dissection, gr 4-8 Windmills, gr 6-8	7 Field Trips Available: GH Dissection, gr 4-8 Windmills, gr 6-8	8 Field Trips Available: GH Dissection, gr 4-8 Windmills, gr 6-8	9 Field Trips Available: GH Dissection, gr 4-8 Windmills, gr 6-8	10
11	12 Field Trips Available: GH Dissection, gr 4-8 Windmills, gr 6-8	13 Field Trips Available: GH Dissection, gr 4-8 Windmills, gr 6-8	14 Field Trips Available: GH Dissection, gr 4-8 Windmills, gr 6-8	15 Field Trips Available: GH Dissection, gr 4-8 Windmills, gr 6-8	16 Field Trips Available: GH Dissection, gr 4-8 Windmills, gr 6-8	17
18	19 <i>No Field Trips Today</i>	20 Field Trips Available: GH Dissection, gr 4-8 Windmills, gr 6-8	21 Field Trips Available: GH Dissection, gr 4-8 Windmills, gr 6-8	22 Field Trips Available: GH Dissection, gr 4-8 Windmills, gr 6-8	23 Field Trips Available: GH Dissection, gr 4-8 Windmills, gr 6-8	24
25	26 Field Trips Available: GH Dissection, gr 4-8 Windmills, gr 6-8	27 Field Trips Available: GH Dissection, gr 4-8 Windmills, gr 6-8	28 Field Trips Available: GH Dissection, gr 4-8 Windmills, gr 6-8	<p>Please note: <u>November 27 - March 9</u> * we can take 1 class (up to 25 students) at one time * start times are flexible - 12:00 or 12:30 * programs are 2 hours long</p>		

March 2018

Sun	Mon	Tue	Wed	Thu	Fri	Sat
				1 Field Trips Available: GH Dissection, gr 4-8 Windmills, gr 6-8	2 Field Trips Available: GH Dissection, gr 4-8 Windmills, gr 6-8	3
4	5 Field Trips Available: GH Dissection, gr 4-8 Windmills, gr 6-8	6 Field Trips Available: GH Dissection, gr 4-8 Windmills, gr 6-8	7 Field Trips Available: GH Dissection, gr 4-8 Windmills, gr 6-8	8 Field Trips Available: GH Dissection, gr 4-8 Windmills, gr 6-8	9 Field Trips Available: GH Dissection, gr 4-8 Windmills, gr 6-8	10
11	12	13	14	15 <i>No Field Trips This Week - Spring Break</i>	16	17
18	19	20	21	22 <i>No Field Trips This Week - Spring Break</i>	23	24
25	26	27	28	29 <i>No Field Trips This Week - Spring Break</i>	30	31

April 2018

	Sun	Mon	Tue	Wed	Thu	Fri	Sat
1	2	3	4	5	6	7	
	Field Trips Available: Animal Olympics, gr K-2 Nature Journals, gr 6-8	Field Trips Available: Animal Olympics, gr K-2 Nature Journals, gr 6-8	Field Trips Available: Animal Olympics, gr K-2 Nature Journals, gr 6-8	Field Trips Available: Animal Olympics, gr K-2 Nature Journals, gr 6-8	Field Trips Available: Animal Olympics, gr K-2 Nature Journals, gr 6-8	Field Trips Available: Animal Olympics, gr K-2 Nature Journals, gr 6-8	
8	9	10	11	12	13	14	
	Field Trips Available: Animal Olympics, gr K-2 Nature Journals, gr 6-8	Field Trips Available: Animal Olympics, gr K-2 Nature Journals, gr 6-8	Field Trips Available: Animal Olympics, gr K-2 Nature Journals, gr 6-8	Field Trips Available: Animal Olympics, gr K-2 Nature Journals, gr 6-8	Field Trips Available: Animal Olympics, gr K-2 Nature Journals, gr 6-8	Field Trips Available: Animal Olympics, gr K-2 Nature Journals, gr 6-8	
15	16	17	18	19	20	21	
	Field Trips Available: ABCs of Nature, preK Animal Olympics, gr K-2 Nature Journals, gr 6-8	Field Trips Available: ABCs of Nature, preK Animal Olympics, gr K-2 Nature Journals, gr 6-8	Field Trips Available: ABCs of Nature, preK Animal Olympics, gr K-2 Nature Journals, gr 6-8	Field Trips Available: ABCs of Nature, preK Animal Olympics, gr K-2 Nature Journals, gr 6-8	Field Trips Available: ABCs of Nature, preK Animal Olympics, gr K-2 Nature Journals, gr 6-8	<i>No Field Trips Today</i>	<i>Keep It Wild : Earth Day Festival</i>
22	23	24	25	26	27	28	
	<i>No Field Trips Today</i>	Field Trips Available: ABCs of Nature, preK Animal Olympics, gr K-2 Nature Journals, gr 6-8	Field Trips Available: ABCs of Nature, preK Animal Olympics, gr K-2 Nature Journals, gr 6-8	Field Trips Available: ABCs of Nature, preK Animal Olympics, gr K-2 Nature Journals, gr 6-8	Field Trips Available: ABCs of Nature, preK Animal Olympics, gr K-2 Nature Journals, gr 6-8	<i>No Field Trips Today</i>	
29	30	<p>Please note: <u>April 2 - May 25</u> * we can take 2 classes (up to 48 students) at one time * start times are flexible - 9:00, 9:30, 12:00 & 12:30 * programs are 2 hours long</p>					
	Field Trips Available: ABCs of Nature, preK Animal Olympics, gr K-2 Soil II, gr 3-5 Nature Journals, gr 6-8						

May 2018

Sun	Mon	Tue	Wed	Thu	Fri	Sat
		1 Field Trips Available: ABCs of Nature, preK Animal Olympics, gr K-2 Soil II, gr 3-5 Nature Journals, gr 6-8	2 Field Trips Available: ABCs of Nature, preK Animal Olympics, gr K-2 Soil II, gr 3-5 Nature Journals, gr 6-8	3 Field Trips Available: ABCs of Nature, preK Animal Olympics, gr K-2 Soil II, gr 3-5 Nature Journals, gr 6-8	4 Field Trips Available: ABCs of Nature, preK Animal Olympics, gr K-2 Soil II, gr 3-5 Nature Journals, gr 6-8	5
6	7 Field Trips Available: ABCs of Nature, preK Animal Olympics, gr K-2 Soil II, gr 3-5 Nature Journals, gr 6-8	8 Field Trips Available: ABCs of Nature, preK Animal Olympics, gr K-2 Soil II, gr 3-5 Nature Journals, gr 6-8	9 Field Trips Available: ABCs of Nature, preK Animal Olympics, gr K-2 Soil II, gr 3-5 Nature Journals, gr 6-8	10 <i>No Field Trips Today</i>	11 Field Trips Available: ABCs of Nature, preK Animal Olympics, gr K-2 Soil II, gr 3-5 Nature Journals, gr 6-8	12
13	14 Field Trips Available: ABCs of Nature, preK Animal Olympics, gr K-2 Soil II, gr 3-5 Nature Journals, gr 6-8	15 Field Trips Available: ABCs of Nature, preK Animal Olympics, gr K-2 Soil II, gr 3-5 Nature Journals, gr 6-8	16 Field Trips Available: ABCs of Nature, preK Animal Olympics, gr K-2 Soil II, gr 3-5 Nature Journals, gr 6-8	17 <i>No Field Trips Today</i>	18 Field Trips Available: ABCs of Nature, preK Animal Olympics, gr K-2 Soil II, gr 3-5 Nature Journals, gr 6-8	19
20	21 Field Trips Available: ABCs of Nature, preK Animal Olympics, gr K-2 Soil II, gr 3-5 Nature Journals, gr 6-8	22 Field Trips Available: ABCs of Nature, preK Animal Olympics, gr K-2 Soil II, gr 3-5 Nature Journals, gr 6-8	23 Field Trips Available: ABCs of Nature, preK Animal Olympics, gr K-2 Soil II, gr 3-5 Nature Journals, gr 6-8	24 <i>No Field Trips Today</i>	25 Field Trips Available: ABCs of Nature, preK Animal Olympics, gr K-2 Soil II, gr 3-5 Nature Journals, gr 6-8	26
27	28	29	30	31		



Fall Harvest Festival

October 14

2:00 p.m. - 5:00 p.m.



Hayrides

Live music

Children's games

Fresh local produce

Pumpkin decorating

Make your own apple cider

And more!